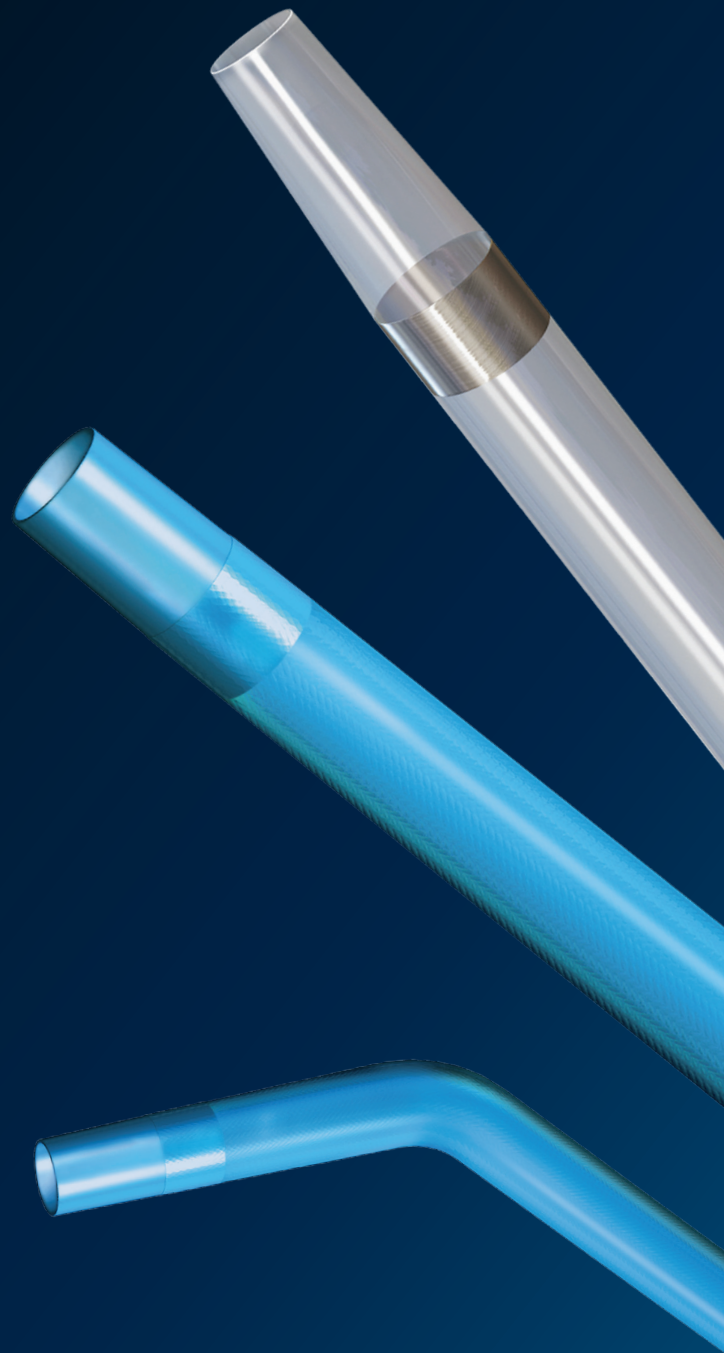


**PHILIPS**

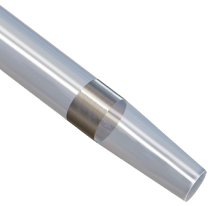
*Quick-Cross*

Support catheters



# Enabling

peripheral and  
coronary interventions



# The number 1 selling support catheter\*

## Quick-Cross support catheter

### Wire support for crossing occlusions.

#### Translucent shaft

- Easy visualization of blood within the catheter confirms luminal access

#### Three, evenly spaced radiopaque markers

- Assists in the assessment of lesion geometry
- Enables confirmation of catheter positioning

#### Hydrophilic coating

- For smooth tracking

#### Low profile tapered tip

- Seamless catheter-to-guidewire transition facilitates crossing of challenging lesions
- Allows for tracking through tortuous anatomy and diffuse disease

	0.014"	0.018"	0.035"
Radiopaque marker spacing	15mm	15mm	50mm
Crossing profile	1.5F	1.8F	3.1F
Available lengths	135cm 150cm	90cm 135cm 150cm	65cm 90cm 135cm 150cm



## Designed for tougher lesions

### Quick-Cross Extreme support catheter

### Additional strength to get through the most extreme cases.

#### Stainless Steel Braid

- Provides additional strength, torque and pushability

#### Three, Evenly Spaced Radiopaque Markers

- Assists in the assessment of lesion geometry
- Enables confirmation of catheter positioning

#### Hydrophilic Coating

- For smooth tracking

#### Low profile tapered tip

- Seamless catheter-to-guidewire transition facilitates crossing of challenging lesions
- Allows for tracking through tortuous anatomy and diffuse disease

	0.014"	0.018"	0.035"
Radiopaque marker spacing	15mm	15mm	50mm
Crossing profile	1.9F	2.1F	3.2F
Available lengths	135cm 150cm	90cm 135cm 150cm	65cm 90cm 135cm 150cm



## Designed for branched anatomy

### Quick-Cross Select support catheter

### The proven performance of quick-cross, now with the ability to navigate and select.

#### Stainless steel braid

- Provides additional strength, torque and pushability

#### 45° angled tip

- Allows the ability to navigate through complex anatomy and diffuse disease

#### Three, evenly spaced radiopaque markers

- Assists in the assessment of lesion geometry
- Enables confirmation of catheter positioning


#### Hydrophilic coating

- For smooth tracking

#### Low profile tapered tip

- Seamless catheter-to-guidewire transition facilitates crossing of challenging lesions
- Allows for tracking through tortuous anatomy and diffuse disease

	0.014"	0.018"	0.035"
Radiopaque marker spacing	15mm	15mm	50mm
Throw length	4mm	4mm	4mm
Available lengths	135cm 150cm	90cm 135cm 150cm	65cm 90cm 135cm 150cm



“The Quick-Cross Select has become an integral part of our practice in crossing challenging CTO’s.”

**Richard M. Florio, MD FACS**  
Vascular Surgeon/Endovascular Specialist

## Testimonials

“The Quick-Cross Select catheter has impacted my practice by drastically reducing my procedural case times and limiting my radiation exposure. It provides me with the ability to navigate tortuous anatomy and traverse difficult lesions with ease. It performs like a Quick-Cross with a steering wheel.”

**Dr. Charles Gordon, MD**  
Interventional Radiologist

“The Quick-Cross Select not only provides me with the appropriate angle to select the Anterior/Posterior Tibial arteries, but it truly seeks out the lumen when helping me cross difficult eccentric lesions in the SFA.”

**James A. Hearn, MD FACC**  
Interventional Cardiologist

“We find the Quick-Cross Select to be most useful in heavily calcified lesions, in which the Guidewire can only be tracked with the Quick-Cross Select. In these cases, the bulky re-entry devices cannot really get to the point of target re-entry site, despite balloon dilatations, and Quick-Cross Select is an excellent option for reentry in such cases.”

**Hasan H. Dosluoglu, MD FACS**  
Chief, Vascular Surgery



## Quick-Cross support catheter

	0.014"		0.018"			0.035"			
Model number	518-032	518-065	518-033	518-034	518-035	518-066	518-036	518-037	518-038
Distal tip profile (F / in)	1.5 / 0.020	1.5 / 0.020	1.8 / 0.023	1.8 / 0.023	1.8 / 0.023	3.1 / 0.041	3.1 / 0.041	3.1 / 0.041	3.1 / 0.041
Distal shaft outer diameter (in)	0.026	0.026	0.03	0.03	0.03	0.05	0.05	0.05	0.05
Working length (cm)	135	150	90	135	150	65	90	135	150
Guidewire compatibility (in)	0.014	0.014	0.018	0.018	0.018	0.035	0.035	0.035	0.035
Guide compatibility (F)	5	5	5	5	5	6	6	6	6
Sheath compatibility (F)	4	4	4	4	4	5	5	5	5
Proximal shaft diameter (in)	0.039	0.039	0.044	0.044	0.044	0.063	0.063	0.063	0.063
Radiopaque marker spacing (mm)	15	15	15	15	15	50	50	50	50

## Quick-Cross Extreme support catheter

	0.014"		0.018"			0.035"			
Model number	518-084	518-086	518-088	518-090	518-092	518-076	518-078	518-080	518-082
Distal tip profile (F / in)	1.9 / 0.025	1.9 / 0.025	2.1 / 0.028	2.1 / 0.028	2.1 / 0.028	3.2 / 0.042	3.2 / 0.042	3.2 / 0.042	3.2 / 0.042
Distal shaft outer diameter (in)	0.034	0.034	0.038	0.038	0.038	0.052	0.052	0.052	0.052
Working length (cm)	135	150	90	135	150	65	90	135	150
Guidewire compatibility (in)	0.014	0.014	0.018	0.018	0.018	0.035	0.035	0.035	0.035
Guide compatibility (F)	5	5	5	5	5	N/A	N/A	N/A	N/A
Sheath compatibility (F)	4	4	4	4	4	5	5	5	5
Proximal shaft diameter (in)	0.042	0.042	0.044	0.044	0.044	0.059	0.059	0.059	0.059
Radiopaque marker spacing (mm)	15	15	15	15	15	50	50	50	50

## Quick-Cross Select support catheter

	0.014"		0.018"			0.035"			
Model number	518-085	518-087	518-089	518-091	518-093	518-077	518-079	518-081	518-083
Distal tip profile (F / in)	1.9 / 0.025	1.9 / 0.025	2.1 / 0.028	2.1 / 0.028	2.1 / 0.028	3.2 / 0.042	3.2 / 0.042	3.2 / 0.042	3.2 / 0.042
Distal shaft outer diameter (in)	0.034	0.034	0.038	0.038	0.038	0.052	0.052	0.052	0.052
Working length (cm)	135	150	90	135	150	65	90	135	150
Guidewire compatibility (in)	0.014	0.014	0.018	0.018	0.018	0.035	0.035	0.035	0.035
Guide compatibility (F)	5	5	5	5	5	N/A	N/A	N/A	N/A
Sheath compatibility (F)	4	4	4	4	4	5	5	5	5
Proximal shaft diameter (in)	0.042	0.042	0.044	0.044	0.044	0.059	0.059	0.059	0.059
Radiopaque marker spacing (mm)	15	15	15	15	15	50	50	50	50
Throw angle	45°	45°	45°	45°	45°	45°	45°	45°	45°
Throw length (mm)	4	4	4	4	4	7	7	7	7

### Quick-Cross indications

Quick-Cross support catheters are guidewire exchange and infusion devices designed for use in the vascular system. The catheters are intended to support a guidewire during access of vasculature, allow for exchange of guidewires and provide a conduit for the delivery of saline solutions or diagnostic contrast agents.

### Contraindications

None known.

### Warnings

Maximum infusion pressure is 300 psi. The catheter is designed and intended for intravascular use only. This catheter is designed and intended for one-time use only. Do not re-

sterilize and/or reuse. Careful inspection before use should verify that the catheter has not been damaged in shipment and that its condition is suitable for the procedure. The catheter should not be advanced through an area of resistance unless the source of resistance is identified by fluoroscopy and appropriate steps are taken to reduce or remove the obstruction. Catheter manipulation should occur only under fluoroscopy. If the catheter is used for infusion, reference the table of flow rates and ensure infusion pressure does not exceed the recommendations. Avoid introducing air or any other gas through the catheter into the vascular system.

### Quick-Cross Extreme and Quick-Cross Select indications

Quick-Cross Extreme and Quick-Cross Select support catheters are intended to guide and support a guidewire during access of the coronary or peripheral vasculature, allow for wire exchanges and provide a conduit for the delivery of saline solutions or diagnostic contrast agents.

### Contraindications

None known.

### Warnings

Store in a cool, dry place. Protect from direct sunlight and high temperature (greater than 55° C or 131° F). Maximum Infusion Pressure: 500 psi for the 0.035 catheter, and 300 psi for the 0.014 and 0.018 catheters. The catheter is designed and intended for one-time use only. Do not re-sterilize and/or reuse. The catheter should only be used by physicians qualified to perform percutaneous vascular interventions.

